

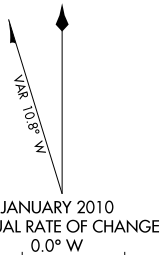
AIRPORT DIAGRAM

BUFFALO NIAGARA INTL (BUF)
BUFFALO, NEW YORK

AL-65 (FAA)

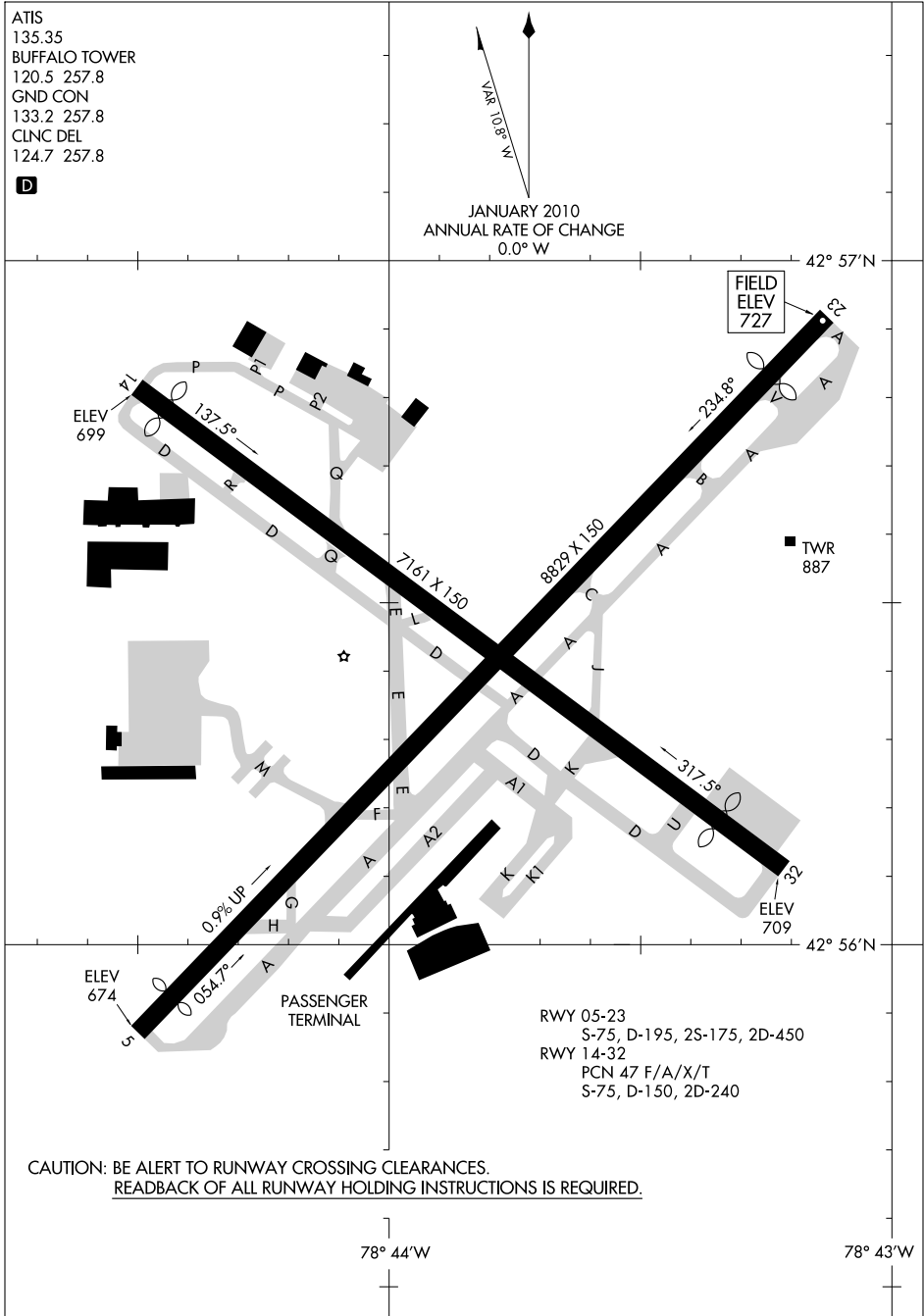
ATIS
135.35
BUFFALO TOWER
120.5 257.8
GND CON
133.2 257.8
CLNC DEL
124.7 257.8

D



NE-2, 12 JAN 2012 to 09 FEB 2012

NE-2, 12 JAN 2012 to 09 FEB 2012



CAUTION: BE ALERT TO RUNWAY CROSSING CLEARANCES.
READBACK OF ALL RUNWAY HOLDING INSTRUCTIONS IS REQUIRED.

RWY 05-23
S-75, D-195, 2S-175, 2D-450
RWY 14-32
PCN 47 F/A/X/T
S-75, D-150, 2D-240

AIRPORT DIAGRAM

BUFFALO, NEW YORK
BUFFALO NIAGARA INTL (BUF)

KBUF

Buffalo Niagara Intl Buffalo, NY

5.00 mi E of city N42 56.4250' W78 43.8350' Mag Var: 09W

Nav aids:

Type:	ID:	Freq:	Radial:	Dist:
VOT	BUF	109.0	066	0 nm
VOR/DME	BUF	116.4	288	4 nm
VORTAC	DKK	116.2	049	36 nm

Traffic Patterns:

Light Aircraft: 1800 MSL; Heavy Aircraft: 2300 MSL

Runways:

05/23: 8829X150; asphalt, grooved, in good condition; Building, 532 ft Right of center, 20 ft high, 413 ft from end, 11:1 clearance slope; Tree, 349 ft Left of center, 27 ft high, 974 ft from end, 29:1 clearance slope;

14/32: 7161X150; asphalt, grooved, in good condition; Tree, 548 ft Right of center, 35 ft high, 607 ft from end, 12:1 clearance slope; Sign, 429 ft Left of center, 11 ft high, 200 ft from end, 1:1 clearance slope;

Noise Abatement:

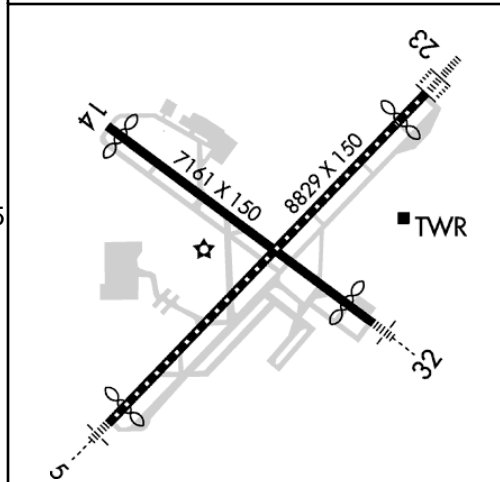
In efct ctc APM

Communication Freqs:

App/Dep 126.5 (234-052)
App/Dep 126.15 (053-233)
WX 716-635-0532 AS ASGND 120.05
Cinc-Del PRE TAXI CLNC 124.7
D-ATIS 135.35
Tower 120.5 Gnd 133.2

Tower: Tower Hrs: 24
Primary Depart. Control Hrs: 24
Primary Approach Control Hrs: 24
ATIS Hrs: 24

Elevation: 727 ft (221.6 m)



Phone: 716-630-6000

Weather: 716-635-0532 (ASOS)

Fees: Landing, Ramp, Parking, Tiedown, Hangar

Charts: NACO: Detroit Sectional

Fuel: 100LL Low-Lead, Jet A

Notes/Remarks:

Twy 'K1' Clsd 2100-0800 Daily

Twy 'A' Southwest Runup Area/Holding Bay Marked Design Group 3 Acft (Generally B727 or Smaller) Unavailable Design Group 4 (Includes But Not Limited to B757 Dc8)

for Fbo Svcs CTC 131.75; for Cargo Svcs CTC 122.95

Heavy Concentration of Gulls; Blackbirds & Starlings Up to 5000 Ft on & Invo of Arpt

Deer on & Invo of Arpt

Intensive Flight Training

In efct ctc APM

Security Directive SD-8G

Business Summary

Prior Aviation Service, Inc.

AOPA Credit Card: Double Points

Location: NW; Hours: 24/7

Frequencies: Unicom: 122.95; ARINC: 131.75

Phone Number: 716-633-1000

BUFFALO NIAGARA INTL (BUF) 5 E UTC-5(-4DT) N42°56.43' W78°43.84'
 727 B S4 FUEL 100LL, JET A OX 1, 2, 3, 4 LRA Class I, ARFF Index D
 NOTAM FILE BUF

DETROIT
 H-10H, 11B, L-31E
 IAP, AD

RWY 05-23: H8829X150 (ASPH-GRVD) S-75, D-195, 2S-175, 2D-450 HIRL CL
RWY 05: MALSR. TDZL. Thld dspcd 535'. Bldg. 0.9% up.
RWY 23: ALSF2. TDZL. Thld dspcd 725'. Tree.
RWY 14-32: H7161X150 (ASPH-GRVD) S-75, D-150, 2D-240 PCN 47 F/A/X/T HIRL
RWY 14: REIL. PAPI(P4L)—GA 3.0° TCH 45'. Thld dspcd 320'. Tree.
RWY 32: MALSR. REIL. PAPI(P4L)—GA 3.0° TCH 54'. Thld dspcd 720'. Sign.

RUNWAY DECLARED DISTANCE INFORMATION

RWY 05: TORA-8827 TODA-8827 ASDA-8292 LDA-7757
RWY 14: TORA-7161 TODA-7161 ASDA-6441 LDA-6121
RWY 23: TORA-8827 TODA-8827 ASDA-8292 LDA-7567
RWY 32: TORA-7161 TODA-7161 ASDA-6841 LDA-6121

AIRPORT REMARKS: Attended continuously. Heavy concentration of gulls, blackbirds, and starlings up to 5000 ft on and in/ovf arpt. Deer on and in/ovf arpt. Twy K1 clsd 0200-1300Z daily. Twy A SW runup area/holding bay marked design group 3 acft (generally B727 or smaller), unavbl design group 4 (includes but not limited to B757, DC8). For fixed-base operator svcs ctc 131.75; for cargo svcs ctc 122.95. Rwy 23 ALSF2 unmonitored. Ldg fee. Flight Notification Service (ADCUS) available.

WEATHER DATA SOURCES: ASOS (716) 635-0532. WSP.

COMMUNICATIONS: D-ATIS 135.35

RCO 122.6 122.2 122.1R (BUFFALO RADIO)

Ⓡ **APP DEP/CON** 126.15 (053°-233°) 126.5 (234°-052°)

TOWER 120.5 **GND CON** 133.2 **CLNC DEL** 124.7 **PRE-TAXI CLNC** 124.7

AIRSPACE: CLASS C svc continuous, ctc **APP CON**

RADIO AIDS TO NAVIGATION: NOTAM FILE BUF.

(H) **VOR/DME** 116.4 BUF Chan 111 N42°55.74' W78°38.78' 288° 3.8 NM to fld. 730/08W.

VOR/DME unusable:

036°-261° blo 11,000'

276°-305° blo 6000'

262°-275° blo 2300'

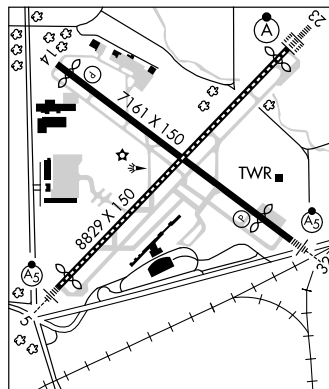
KLUMP NDB (LOM) 231 BU N43°00.02' W78°39.05' 233° 5.0 NM to fld.

PLAZZ NDB (LOM) 204 GB N42°52.43' W78°48.99' 053° 5.5 NM to fld.

ILS 111.3 I-BUF Rwy 23. Class IE. LOM KLUMP NDB. Glideslope unusable byd 5° rgt of course.

ILS 108.5 I-GBI Rwy 05. Class IA. LOM PLAZZ NDB.

ILS/DME 109.95 I-BNQ Chan 36(Y) Rwy 32.



CLARENCE AERODROME (D51) 5 NE UTC-5(-4DT) N43°04.00' W78°40.99'

DETROIT

589 NOTAM FILE BUF

RWY 10-28: 2500X67 (TURF) LIRL

RWY 10: Fence. **RWY 28:** Trees.

AIRPORT REMARKS: Unattended. Ultralights on and in/ovf arpt. Rwy 10-28 outlined with cones. ACTIVATE LIRL Rwy 10-28-122.7.

COMMUNICATIONS: CTAF/UNICOM 122.7

BUFFALO-LANCASTER RGNL (See LANCASTER)

BURRELLO-MECHANICVILLE (See MECHANICVILLE)

CALVERTON N40°55.78' W72°47.93' NOTAM FILE ISP.

NEW YORK

(L) **VOR/DME** 117.2 CCC Chan 119 219° 7.2 NM to Brookhaven. 86/13W.

COPTER

VOR portion unusable 280°-290° byd 25 NM.

H-10I, L-33B, 34I

CAMBRIDGE N42°59.66' W73°20.64' NOTAM FILE BTV.

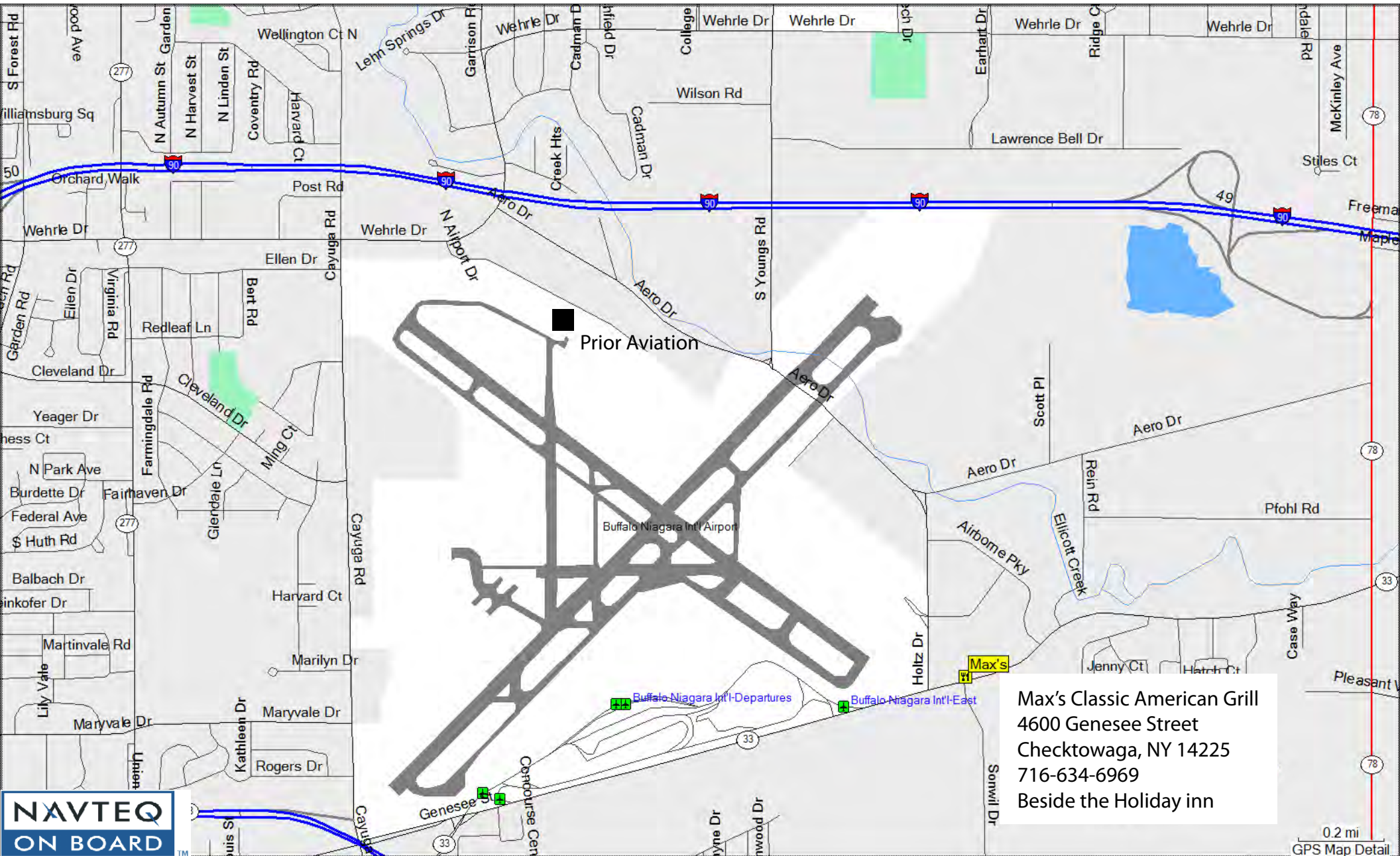
NEW YORK

(L) **VOR/DME** 115.0 CAM Chan 97 159° 7.5 NM to Bennington State, Vt. 1490/14W.

H-11C, 12I, L-32G, 34I

HIWAS.

DME unusable 050°-130° beyond 20 NM below 9000'.



Prior Aviation

Buffalo Niagara Intl Airport

Max's

Max's Classic American Grill
4600 Genesee Street
Cheektowaga, NY 14225
716-634-6969
Beside the Holiday inn

NAVTEQ
ON BOARD

0.2 mi
GPS Map Detail